

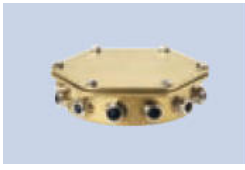





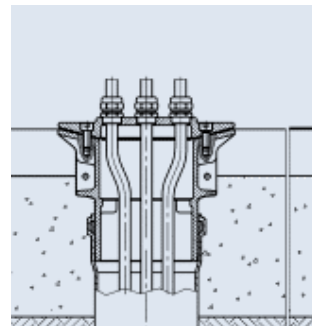
Fountain cable entry glands from Exclusive Fountains

Fountain cable entry glands are how you bring pump and light cables into a concrete fountain pool. They should be installed prior to the concrete being cast.

Name	PGT 4	PGT 7	PGT 12
Top section			
Dimensions Dia x mm	50 x 150	50 x 190	70 x 230
Number of cable outlets	4	7	12
Weight In Kg	1.1	1.9	5.5
Name	PGB 2	PGB 3	PGB 3
Bottom section			
Dimensions Dia x mm	70 x 110	100 x 141	100 x 141
Weight In Kg	2.1	3.2	3.2

Not shown is the optional ring for use with pools with liners / fibre glass. We can also supply a single cable entry version.

This is how they “look” when mounted



The top section is secured to the bottom section by screws which are supplied.

One of each top and bottom section is required for a new installation. Both sections are made from cast tombac.

For more information Visit our website

www.exclusivefountains.co.uk